



## CompoAdapt™

# Tube Loaded Carbon Composite Blade Holder Easy maintenance and trouble-free operation

**Runtech Systems** state-of-the-art- composite manufacturing technology gives a solution for challenging doctoring positions.

**Doctoring** is one of the basic operations in paper and board making which is taken for granted. CompoAdapt composite holder is designed to be installed as well on an existing steel doctor beams as on the newest generation of Runtech CompoDoc – full carbon composite doctor beams.



### FEATURES

- Light carbon composite construction
- Uni-directional carbon composite top plate
- Robust design – suitable for sheet knock down positions
- No heat expansion
- Specially designed for composite doctor beams but can also be used with conventional steel doctors

### BENEFITS

- Easy maintenance and handling
- Excellent conformability across the machine
- Easy to install and keep clean
- Easy blade change
- Due to the design it's very easy to replace conventional K35 and DST style of holders with CompoAdapt

### APPLICATIONS

- All sheet knock down positions
- Breast roll
- Press rolls
- Drying cylinders
- Calender rolls
- Reel
- Guide rolls

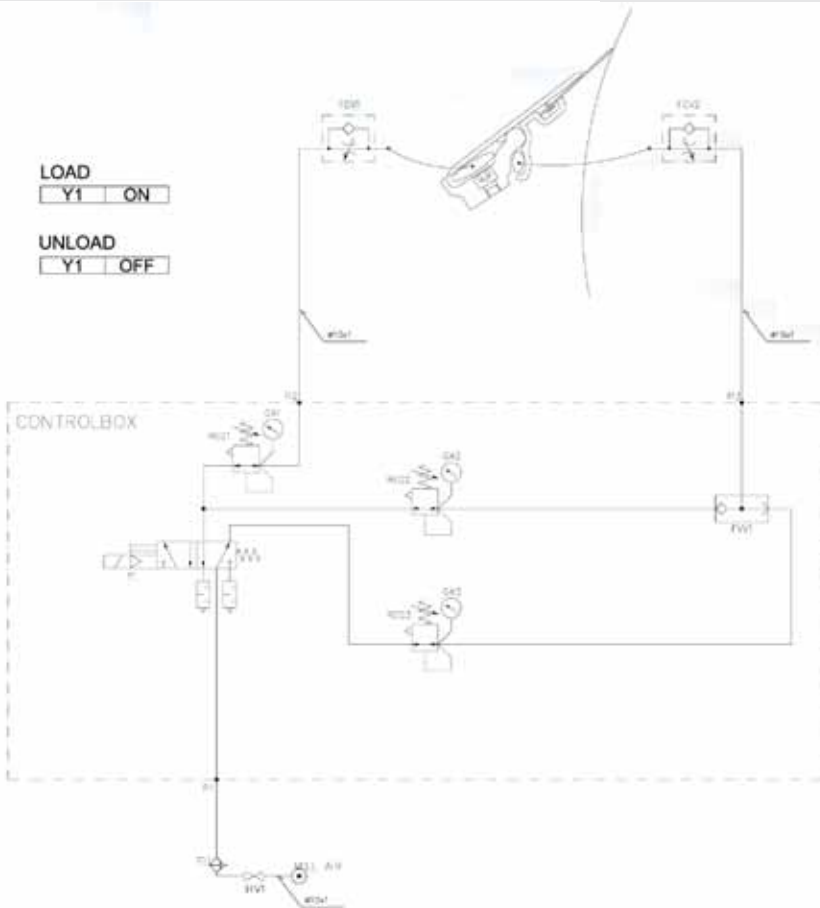
If you need more information  
please contact:  
sales@runtech.fi or  
+358 3 471 1000

24h service: +358 40 775 6434

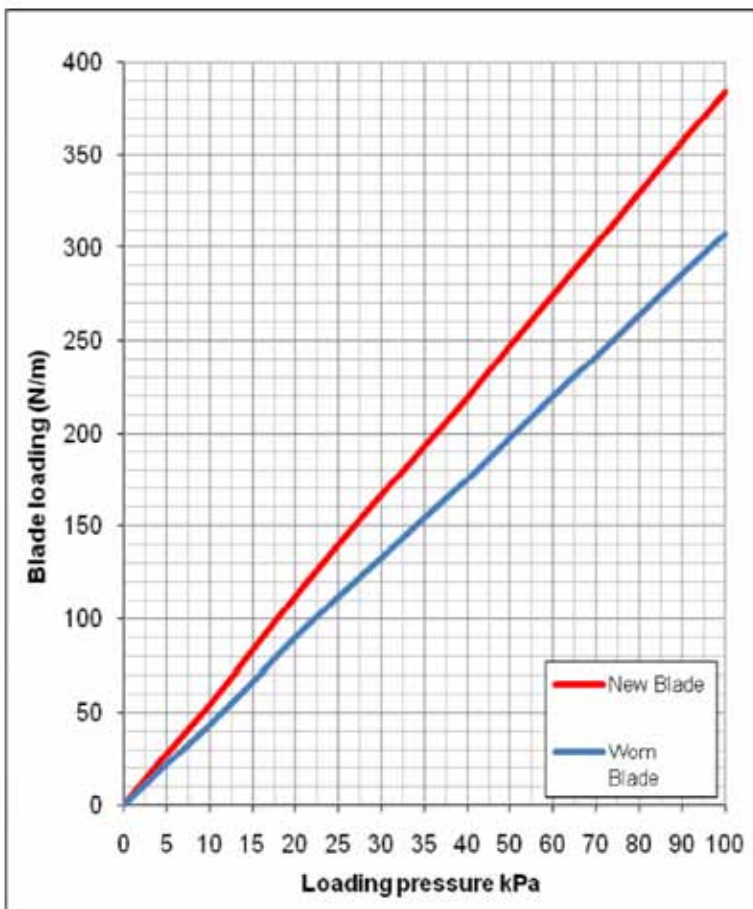


More profitability - Less energy

## Typical pneumatic drawing



## CompoAdapt loading graph (with 50 kPa Opening Pressure)



### REFERENCES

- over 150 units sold

- AHL Rottersac PM1 – 4 pcs
- Arctic Paper PM1 – 2 pcs
- Domtar Johnsonburg PM5 – 1 pcs
- Domtar Marboro PM1 – 4 pcs
- Dunafin PM9, Hungary – 3 pcs
- Hamburger Pitten PM4 – 15 pcs
- Hamburger Dunaújváros PM7
- Kemiartliners – 2 pcs
- Kreuzau PM3 – 3 pcs
- Madison Paper PM3 – 2 pcs
- Mondi Steti PM5 – 3 pcs
- NewPage Porthawkesbury PM1 - 1 pcs
- NewPage Porthawkesbury PM2 – 2 pcs
- Propapier PM1 – 1 pcs
- SCA Ortviken PM4 – 4 pcs
- SCA Ortviken PM5 – 4 pcs
- Stora Enso Hylte PM4 – 2 pcs
- Stora Enso Kotka PM1 – 3 pcs
- Stora Enso Kvarnsveden PM11 – 2pcs
- Stora Enso Kvarnsveden PM8 – 2 pcs
- Stora Enso Veitsiluoto PM1 – 7 pcs
- UPM Caladonia PM1 – 2 pcs
- UPM Chapelle PM3 – 2 pcs
- UPM Kaipola PM7 – 1 pcs

### SPARE PARTS

- PI2016 Top Plate
- PI2017 Spare Hose Kit